



CALLISTO III

CATEGORY: **Agricultural / Landscape maintenance**

HORIZONTAL REACH (m): **4.55 - 4.95**

ROTOR POWER (HP): **45**

MORE DETAILS
www.lagarde-sas.fr



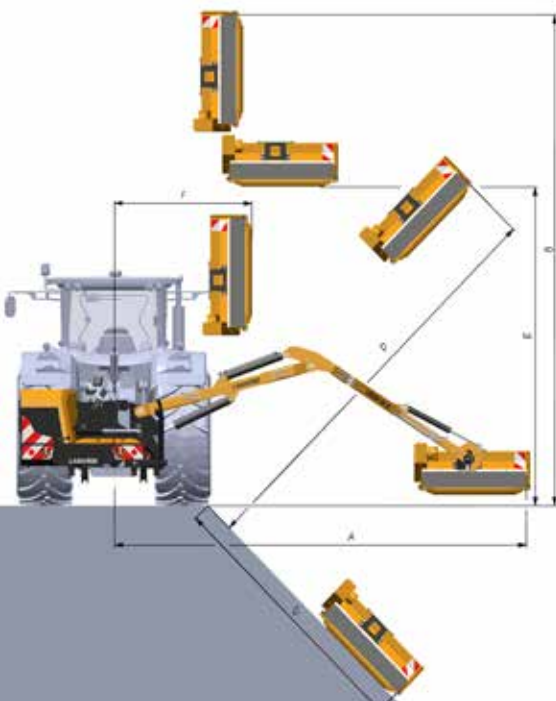
THE COMPACT REACH MOWER

The CALLISTO III reach mower is the ideal grounds maintenance implement. Farmers and rural district authorities find its compact size a boon for clearing roadside verges, narrow lanes, clearing embankments or ditches or even cutting hedges.



THE STANDARD ESSENTIALS

- Right-hand arm
 - Callisto III 45 without slew
 - Callisto III 50 with slew
- Rotor rating 45 HP
- PTO (rpm)
- Hydraulic cooler
- Breakaway safety feature
 - Callisto III 45 hydraulic safety device on rocker
 - Callisto III 50 with 90° slew
- 1-m shredding unit grass rotor with Y-blades
- Indirect 2 V-belt drive
- Cable-controlled rotor
- Follower roll, Ø 120 mm
- FIRST cable controls
- Standard linkage with two stabilizers



	Callisto III 45	Callisto III 50
Horizontal reach A (m)	4.55	4.95
Vertical reach B (m)	5.45	5.50
Ditch reach C (m)	3.00	3.20
Bank reach D (m)	4.50	4.80
Height on hedge E (m)	2.75	3.00
Hedge-side reach F (m)	1.00	1.30
Arm type and slew	Right-hand arm, none	Right-hand arm, 90° slew
Obstacle safety feature	Hydraulic on rocker	Hydraulic on pivot
Unit rotation angle	200°	200°
Weight (kg)	720	770
Min. recommended tractor power (HP)	40	50
Min. recommended tractor weight (kg)	1600	1800



Unit well balanced

FRAME

- Rugged, up to 20 mm thick plus doublers
- Pivot close to linkage mounting on the 5-m version with slew

OIL COOLER

- 11 kW
- Automatic thermostat
- Positioned at the rear, away from flying debris
- Screen on cover for easy servicing

Protected oil cooler



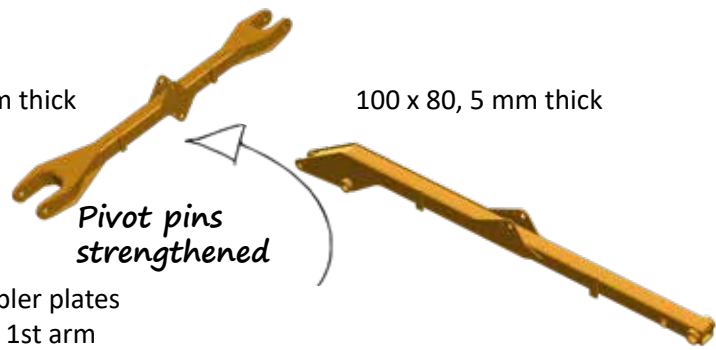
TANK AND FILTRATION

- Capacity 120 L
- Pressurized
- 25 µ pressure and return filters
- Oil change every 1200 h

High-capacity distributor

100 x 100, 7 mm thick

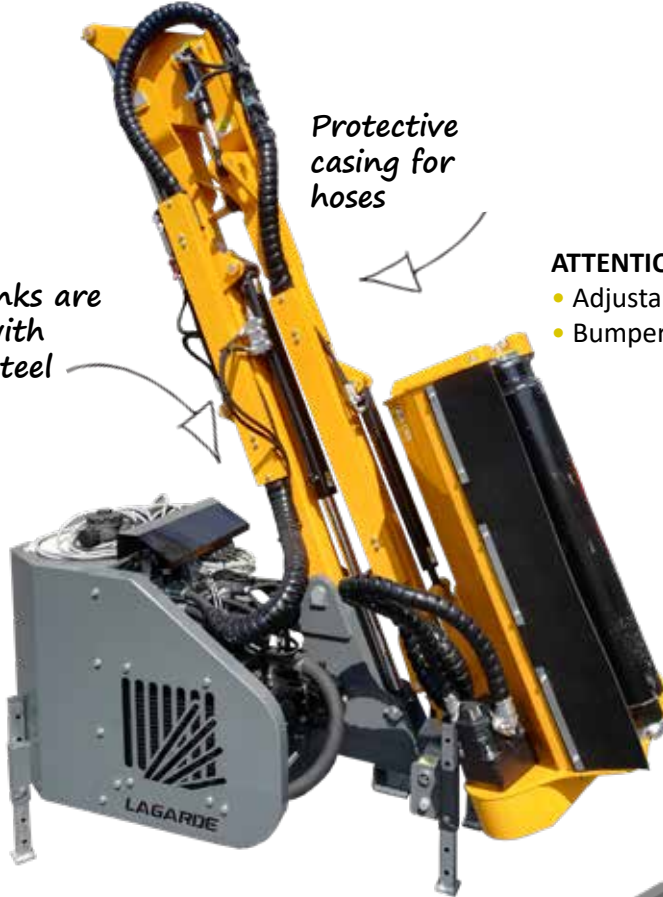
100 x 80, 5 mm thick



Pivot pins strengthened

ARM

- 20-mm thick doubler plates
- High mounting of 1st arm
- Cylinder above 1st arm to clear obstacles



Protective casing for hoses

All the links are bushed with treated steel shafts

ATTENTION TO DETAIL

- Adjustable stand legs
- Bumper with optional lights

Power and performance



ROTOR HYDRAULICS

- Open centre hydraulic circuit
- Double aluminium pump
- Cast-iron motor
- Group 3 multiplier

FIRST OR EP3 CONTROLLERS

Electric rotor control

FIRST cable control

Offers easy to master cable control that will be particularly suitable for occasional use. Reverse switch safety and lever-action safety stopping.

EP3 joystick control

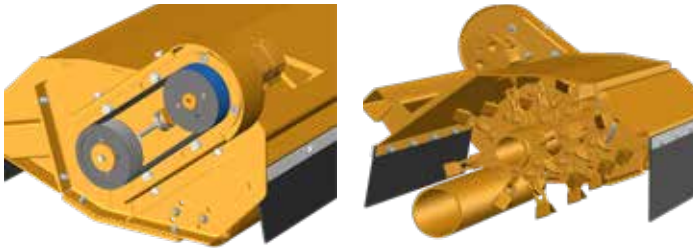
Electric proportional joystick control (on 3 movements: boom, rocker and cutting heads)

- Electrically-controlled two-way rotation
- Hour meter



Ergonomics



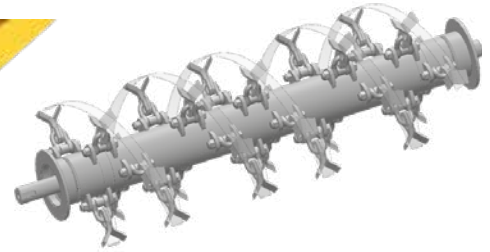
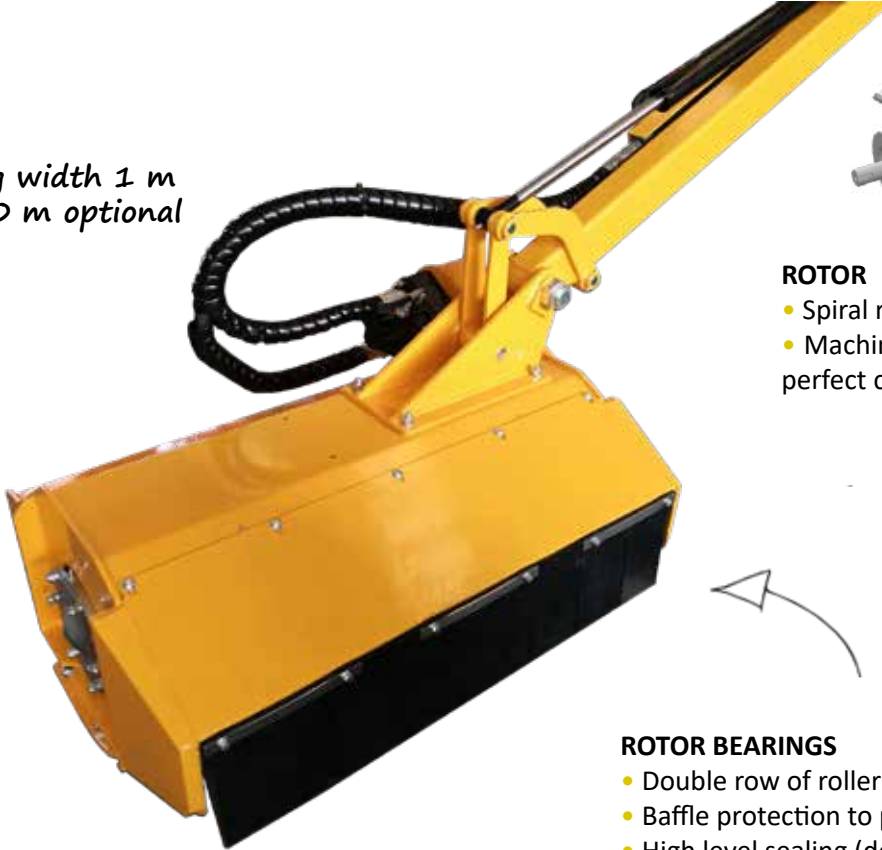


SHREDDING UNIT

- 5-mm body plate
- 6-mm reinforced body side walls

INDIRECT ROTOR DRIVE
by 2 V-belts

*Cutting width 1 m
or 1.20 m optional*

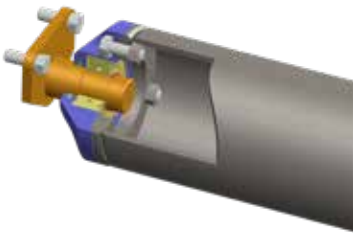


ROTOR

- Spiral rotor design
- Machined tube and flanges for perfect concentricity and solidity

ROTOR BEARINGS

- Double row of roller bearings
- Baffle protection to prevent wire and twine clogging
- High level sealing (double lip seal + felt seal)



WORKING ROLLER

- \varnothing 120 mm, 7 mm thick
- Self-aligning ball bearings
- Machined assembly for perfect concentricity



ROTORS



Grass rotor (standard)

Rotor	Grass
Application	Grass, scrub
Shredding capacity (cm)	Ø 4
Cutting width (m)	1 or 1.20
Working diameter (mm)	360
Rotor rotation speed (rpm)	3000
Type of cutting heads	8-mm thick Y-blades.
Number of cutting heads	40 or 56
Design	8-mm thick Ø 108 mm tube
Shaft diameter (mm)	50

CUTTING HEADS



On grass rotor
(standard)

LINKAGE MOUNTINGS



Standard linkage with two stabilizers

Hooking part to be adjusted to scale of tractor

STANDARD

Features	Horizontal reach (m)	4.55	4.95
	Type of machine	Right-hand arm, without slew	Straight forward arm with 90° sweep
	Rotor power (HP)	45	45
	PTO (rpm)	540	540
	Pump and rotor motor	Cast iron gear assembly	Cast iron gear assembly
	Movement pump	Aluminium gear	Aluminium gear
	Rotor circuit flow rate (L/min)	72	72
	Movement circuit flow rate (L/min)	17	17
	Filtration	25 µ pressure and suction	25 µ pressure and suction
	Tank capacity (litres)	120	120
	Cooler power (kW)	11	11
	Shredding unit	Cutting width (m)	1 or 1.20
Rotor control		Cable control, electric in EP3 version	
Rotor drive		Indirect by 2 V-belts	Indirect by 2 V-belts
Working roller		Ø 120 mm	Ø 120 mm
Accessories	Hydraulic breakaway safety feature	●*	●**
	CC control – Cable control	●	●
	EP3 control – Electro-proportional	○	○
	CS control – low pressure	–	–
	PREMIUM control – Electric	–	–
	Electric lift float cut-out	–	–
	Hour meter	○	○
	Lighting kit	○	○
	Standard linkage mounting	●	●
	CUMA linkage mounting	–	–
	Fixed linkage frame	–	–
	Indirect rotor drive	●	●
	1.2-m shredding unit	○	○
	Grass rotor	●	●
	Spiral scrub clearing rotor (Y or hammer blades)	–	–
	Branch cutting rotor 360°	–	–
	MAXI working roller, Ø 160 mm	–	–
	Automatic unit and second cutting head docking	–	–
	Multisaw and cutterbar	○	○
	DEBRIS BLOWER kit	–	–
Warning sign storage	–	–	

● Standard – Not available ○ Optional

* on rocker cylinder

** on slew cylinder



Equipment designed to last

LAGARDE - 65 Avenue de Tréville - 64130 Mauléon Licharre

Tél : +33 5 59 19 20 10 - Fax : + 33 5 59 19 20 11 - contact@lagarde-sas.fr



Your LAGARDE dealer